

**As a Premier Partner Program member and BEA development partner, iWay provides seamless integration between the BEA WebLogic Platform and over 80 enterprise databases, 35 platforms and file systems, and query adapters for leading ERP systems.**

### Product Highlights

- **Use ANSI-standard SQL (and XML)** to access over 80 relational and nonrelational data sources from the WebLogic Platform
- **Generate extensive metadata** to mask differences among systems and embed transformation logic, views, joins, virtual columns, and more
- **Absolutely no mainframe coding required**
- **Reduce training costs** and eliminate overhead associated with the maintenance of custom-written adapter code
- **Fully bidirectional adapters** (events and services) based on BEA's Application Integration (AI) framework
- **Fully compliant with JCA 1.0 and JCA 1.5 standards**

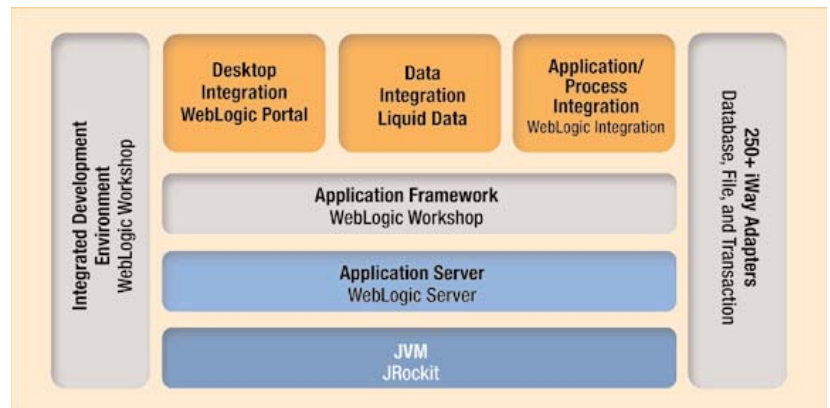


## iWay Mainframe Adapters for BEA WebLogic Platform

***iWay Adapters Accelerate Integration of Legacy Data and Enterprise Applications for BEA WebLogic.***

For over 10 years, iWay Software's innovative integration tools and adapter solutions have delivered a comprehensive, reusable architecture that enables new business initiatives to work seamlessly with existing IT assets. iWay adapter solutions combine openness with plug-and-play design that translates into faster project implementations and cost savings of up to 80 percent compared with custom-coded integration. They also save substantially on maintenance, because applications can interact with iWay's standardized integration architecture – not bewildering “hard-coded” connections to back-office systems. These are the reasons why iWay adapters represent today's best value – they mask the complexities of enterprise IT environments, so existing assets can be leveraged to help implement new business initiatives faster than ever before.

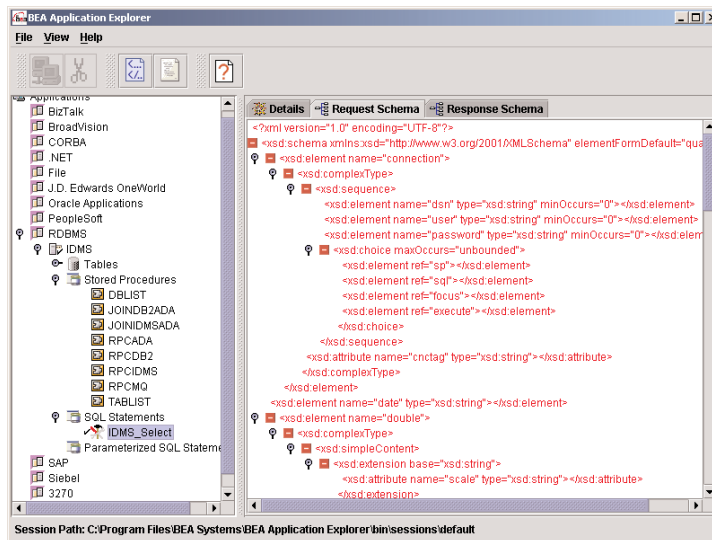
Your BEA WebLogic investment has provided you with a secure, scalable, manageable, reliable framework for your external facing Web applications. Many BEA customers are now confronting the challenge of integrating their Java™ and Web-based applications with back-office and mission-critical systems. iWay's Universal Adapter Framework is the No. 1 solution for connecting to your back-end systems, offering a standard set of tools for accessing your mission-critical information assets. Through a close development-level relationship, iWay's Universal Adapter Framework is natively tied in to BEA WebLogic, ensuring a seamless fit into your IT environment.



iWay adapters extend BEA WebLogic Integration to over 80 database platforms.

## Advanced Capabilities for z/OS and OS/390

Using BEA's own WebLogic Integration RDBMS adapter as an interface to the entire suite of iWay data adapters, iWay enables you to integrate over 80 relational and nonrelational data sources with your BEA applications. iWay's seamless integration with WebLogic Integration allows developers to use the same design-time tools for integrating complex, mainframe-based data sources as they do for common JDBC databases, reducing the complexity and time involved with mainframe integration projects.



BEA Application Explorer  
introspects IDMS.

Leveraging iWay's native integration with WebLogic Integration, your BEA RDBMS adapter will automatically translate SQL or XML data requests into the native Data Manipulation Language (DML) for the targeted data source. This translation capability makes nonrelational database and sequential file data look like standard relational database tables to reduce the need for end-system knowledge and speed the development of integration projects.

iWay's DML achieves its superior data-retrieval capabilities by utilizing native APIs, C, or Java-based interfaces and extends to support heterogeneous joins between disparate data sources and Two-Phase commit support, including nonrelational data stores. In addition to data access, iWay provides a Metadata Repository and a complete set of tools for the creation of metadata, including relational and nonrelational data. iWay's enhanced metadata capabilities extend to include the ability to create virtual-fields definitions for any data source.

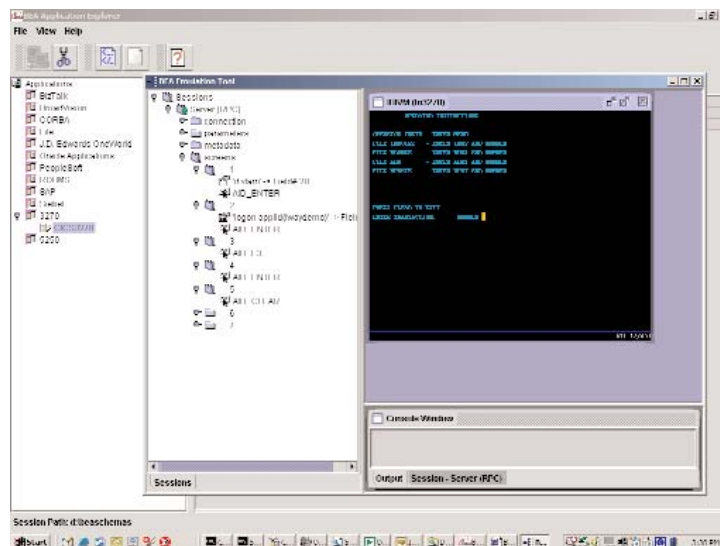
## Key Features and Benefits

- Absolutely no mainframe coding required
- Only one acquired skill-set needed to access all database platforms
- Advanced metadata creation
- Scalability
- Advanced run-time control and dynamic load balancing

- Security interfaces such as RACF, ACF/2, and TOP SECRET
- Web-based console for monitoring and diagnostics

## Advanced Support for 3270 and 5250-Based Legacy Applications

Through iWay's Terminal Emulation Adapter for 3270 and 5250, you can integrate your mission-critical legacy applications into your BEA WebLogic environment. Through our advanced terminal emulation functionality, legacy application sessions are encapsulated via the capture of screens, keystrokes, input parameters, output parameters, and entered data. With the saved session, you can easily create a Web application or asynchronous XML-based application with functionality that is equivalent to your legacy application.



iWay's 3270 adapter encapsulates an application session.

## Support for 250+ Enterprise Information Systems

iWay's native integration into BEA WLI and JCA-based integration into BEA WebLogic Server and Portal allows you to seamlessly incorporate our over 250 intelligent adapters into your environment, integrating your J2EE™ applications with your Enterprise Information Systems, all within a Universal Adapter Framework. iWay provides intelligent adapters for:

- Application packages such as Siebel, SAP, PeopleSoft, Ariba, Lawson, Clarify, and many more
- Electronic business formats such as SWIFT, FIX, HIPAA, ACORD, ebXML, OAG BODs, and XBRL
- Legacy database systems such as Adabas, Ingres, MUMPS, Teradata, Unisys, and many others
- Relational databases such as Oracle, MS SQL Server, Informix, Sybase, and many more
- Transaction environments such as CICS, IMS, and Tuxedo
- 35 mainframe, midrange, UNIX, and PC operating platforms
- Custom 3GL and 4GL applications

- .NET assemblies
- Messaging products like Sonic MQ, Oracle AQ, MQSeries™, or JMS™
- Component technologies like COM, CORBA, and EJB™
- Terminal emulation adapters that provide wrappers around the presentation tiers of applications of “green-screen” 3270 and 5250 systems

## Accelerating Integration Initiatives

iWay is the world’s leading provider of software for connecting application frameworks like J2EE and .NET to legacy mainframe databases, composite packaged applications, transaction processing systems, relational database systems, and other business systems. All iWay adapters are accessible, without the need to write and maintain code, within the same Universal Adapter Framework, accelerating your integration project timelines and lowering your TCO.

## Technical Specifications

### Database Platforms Supported

- |                       |                                  |               |
|-----------------------|----------------------------------|---------------|
| • Adabas              | • Ingres                         | • Rdb         |
| • ALLBASE/SQL         | • Interplex                      | • RedBrick    |
| • Cache               | • J.D. Edwards                   | • RMS         |
| • C-ISAM (Informix)   | • Microsoft SQL Server           | • SAP BW      |
| • C-ISAM (MicroFocus) | • Microsoft OLAP Services        | • Siebel      |
| • CICS                | • Model 204                      | • SQL/DS      |
| • Datacom             | • MUMPS (Digital Standard MUMPS) | • SUPRA       |
| • DB2                 | • Natural                        | • Sybase      |
| • DB2 UDB             | • NOMAD                          | • Sybase/IQ   |
| • DB2/400             | • Nucleus                        | • System 2000 |
| • DBMS                | • Omnidex                        | • Teradata    |
| • ENSCRIBE            | • OpenIngres                     | • TOTAL       |
| • Essbase             | • Oracle 7                       | • TurboIMAGE  |
| • Flat Files          | • Oracle 8i                      | • UNISYS DMS  |
| • FOCUS Data Access   | • Oracle 9i                      | • UniVerse    |
| • CA-IDMS/DB          | • Peoplesoft                     | • VSAM        |
| • IDS-II              | • PROGRESS                       | • XML         |
| • ImageSQL            | • QSAM                           | • Bull GCOS 7 |
| • IMS                 |                                  | • CA-IDMS     |
| • Informix            |                                  | • CA-IDMS     |

## Runtime Platforms Supported

- Bull ESCALA
- Bull GCOS 8
- HP MPE/XL
- HP-UX
- Linux, Caldera
- Linux, Red Hat
- MVS, OS/390, z/OS
- NCR MP-RAS
- OpenVMS Alpha
- OpenVMS VAX
- OS/2 EE
- OS/390 Open Edition
- OS/400
- RS6000 AIX
- Sequent Dynix
- Siemens Reliant
- SUN Solaris
- Tandem
- Tru64 UNIX
- Unisys
- VM ESA
- Windows 2000
- Windows NT Intel
- Windows XP

## Find Out More

For more information about iWay Software's unique approach to application integration and the features and benefits of the iWay Intelligent Adapter Suite, please visit [www.iwaysoftware.com](http://www.iwaysoftware.com).

