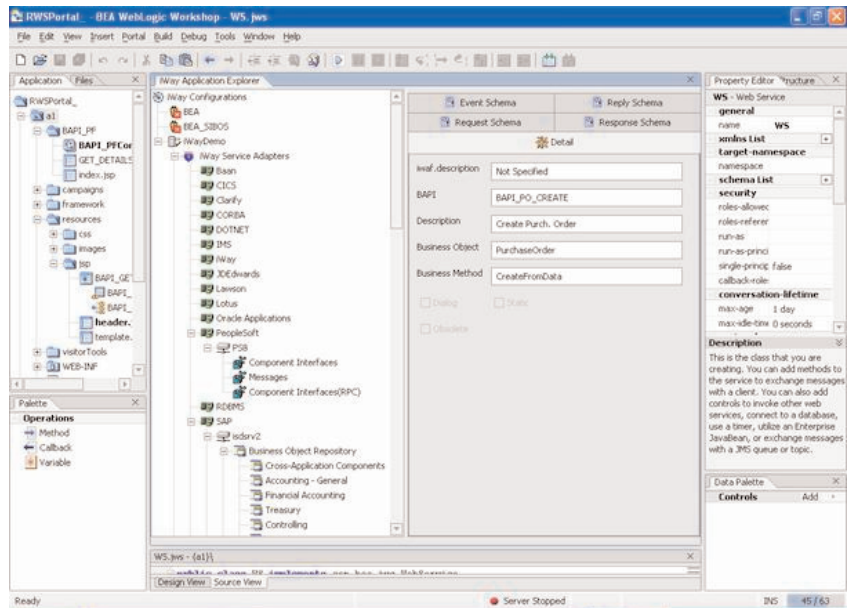


Achieve business agility through rapid, service-oriented integration to virtually any enterprise information asset. Simplify the “last mile” and unlock investments in enterprise applications and infrastructure.

## iWay Universal Adapter Framework for BEA WebLogic



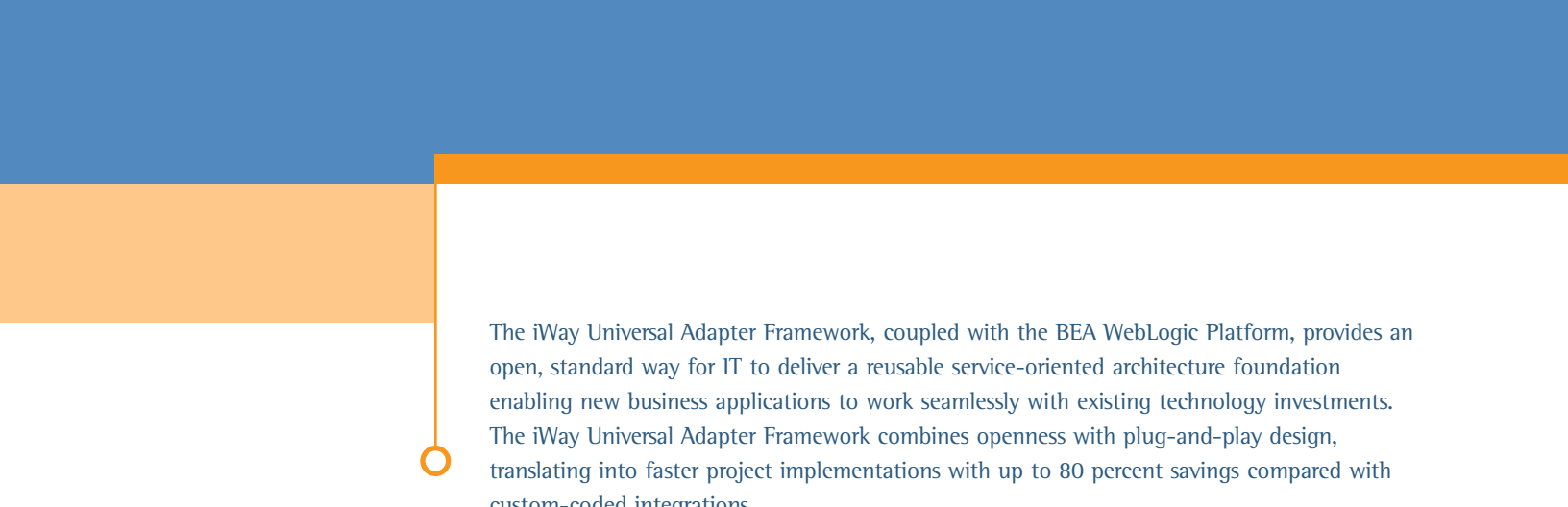
iWay Software Intelligent Adapters are tightly integrated with WebLogic Platform. Here iWay adapters are exposed through a control in WebLogic Workshop.

- Provides access to over 250 packaged applications, legacy mainframe systems, data sources, middleware technologies, and e-business formats
- Enables service-oriented and event-driven architectures via bidirectional interfaces to 250+ enterprise information systems
- Uses standards such as JCA, WSDL, and SOAP to create reusable interfaces from information assets for use with BEA WebLogic Server, Portal, and Integration
- Enables the creation of BEA WebLogic Workshop controls and application views from interfaces created through a GUI tool – absolutely no interface coding required
- Maximizes ROI and reduces TCO by masking the complexity of packaged applications and legacy systems
- Taps into virtually any information system or business process using standard BEA, Java™, and XML skill sets

### BEA and iWay: Delivering the Foundation for Service-Oriented Architecture

As businesses strive for agility and to unlock the value of their investments in enterprise applications and infrastructure, they look to service-oriented architecture (SOA) and Web services to reduce the cost and complexity of integration projects. BEA delivers the foundation for innovation through the BEA WebLogic Platform™, a unified platform that reduces the lifetime costs of infrastructure by over 20 percent through a service-oriented development environment and unified runtime framework.

One of the biggest challenges to embracing the benefits of service-oriented architectures is incorporating the investments in existing applications, data, transaction systems, and middleware into that strategic services framework. Proprietary adapters, which have traditionally solved the “last mile” challenge of integrating existing resources, involve significant development, integration, and maintenance costs. The creation of a flexible service-oriented architecture framework requires reusable, code-free, open adapters.



The iWay Universal Adapter Framework, coupled with the BEA WebLogic Platform, provides an open, standard way for IT to deliver a reusable service-oriented architecture foundation enabling new business applications to work seamlessly with existing technology investments. The iWay Universal Adapter Framework combines openness with plug-and-play design, translating into faster project implementations with up to 80 percent savings compared with custom-coded integrations.

### **iWay Software's Proven, Plug-and-Play Adapter Framework for BEA WebLogic Platform**

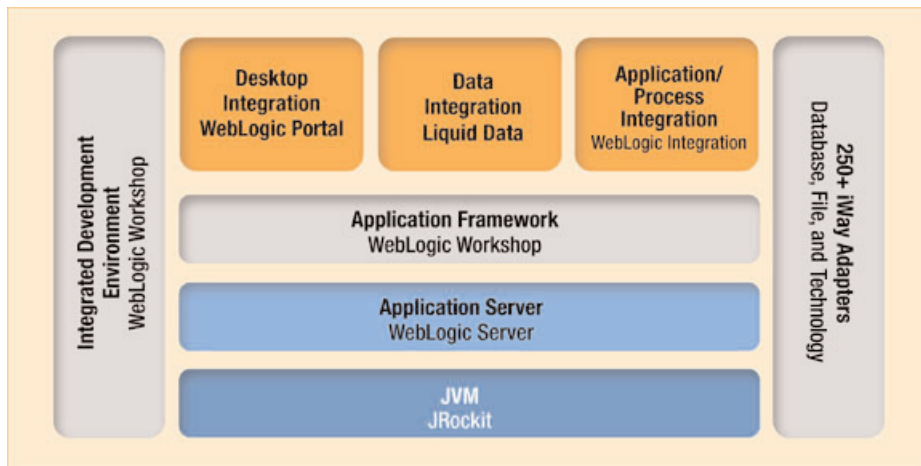
iWay Software's proven Universal Adapter Framework, integrated with the BEA WebLogic Platform, is the key to quickly and efficiently exposing applications as consumable services and transforming business processes by integrating existing data, applications, and technology environments with new systems and applications – including all popular ERP, CRM, and SCM application packages, messaging technologies such as MQSeries, application technologies like Java™/J2EE/JCA and XML, and Internet technologies such as Web services and .NET.

With over 250 adapters and 29 years' experience accessing complex enterprise applications and systems, iWay delivers the adapter solutions for just about any resource to participate in a service-oriented architecture. iWay's 100% Java™ Universal Adapter Framework version 5.5 is fully validated to plug natively into the BEA WebLogic Platform, delivering investment protection and a secure, scalable, manageable framework for integrating new and legacy business and technology services.

The iWay Universal Adapter Framework provides reliable bidirectional XML-based integration using the BEA WebLogic Platform. iWay adapters support the following service (inbound) and event (outbound) integration operations:

**Service.** A service is a request from WebLogic Platform into an application via an adapter, with the results of the call returned to WebLogic Platform. The iWay Universal Adapter Framework receives an XML service request document from a WebLogic-based application; transforms the document into the required format; interacts with the application to invoke the appropriate business logic to perform inserts, deletes, and updates or to extract requested data; formats the result or any requested data into an XML service response document; and returns the data to the appropriate application.

**Event.** An event is a message that an application emits to signal that an action has taken place. Here, the iWay Universal Adapter Framework receives a business event from the application and then transforms the message data into an appropriate XML event document and sends the document to WebLogic Platform.



| iWay adapters extend BEA WebLogic Integration to over 250 IT assets.

### Simplified, Reliable, and High-Performance

- **Seamless Design-Time Integration** – BEA’s WebLogic Workshop, a full-featured Java development environment, simplifies and reduces the complexity of migrating to an SOA by enabling IT to visually build and assemble enterprise-scale business services. With the iWay Universal Adapter Framework, the iWay Application Explorer is an integrated component of the BEA WebLogic Platform, enabling iWay Intelligent Adapters to be exposed as workshop controls. This integration provides developers a seamless experience down to the “last mile.”
- **Management and Monitoring Support** – iWay Software delivers an easy-to-use Web-based management and monitoring console designed for unified management and monitoring of all iWay adapters across both Web services and JCA deployment solutions. Management services exposed in the management console include the number of invocations for a given service, the average elapsed time of invocations, elapsed time for event delivery, and message logging. Also included is an API that enables the creation of custom management and monitoring capabilities.
- **Integrated Security** – The iWay Adapter Framework supports identity propagation and credential mapping across all adapter types and respects the security structure and protocols supported in the BEA WebLogic Platform.
- **Ease of Configuration** – The iWay Universal Adapter Framework eases the process of configuration by supporting a management API, extensible CCI control, JCA design time in the console, and the ability to set allowed users per service.
- **Reliability, Availability, Scalability, and Performance** – The iWay Universal Adapter Framework provides reliability, availability, scalability, and performance features by supporting clustered deployment, load balancing, fail-over, migration, and scalability for both services and events in JCA and Web service deployment modes.

## iWay Adapter Classes for the BEA WebLogic Platform

iWay's native integration with the BEA WebLogic Platform enables IT to seamlessly incorporate iWay's 250 intelligent adapters into an open IT integration infrastructure. iWay provides a wide array of intelligent adapters for the application packages, electronic business formats, and transaction environments below. iWay adapters sold and supported by BEA include:



### Application System Adapters

#### iWay Intelligent Adapters for SAP

iWay SAP Adapters easily send and receive SAP messages using standard or customized synchronous RFCs, BAPIs, or IDocs and asynchronous IDocs from SAP to WebLogic Platform.



#### iWay Intelligent Adapter for PeopleSoft

The iWay Adapter for PeopleSoft 7.5 and 8.0 uses native PeopleSoft component interfaces and message events to exchange messages and transactions between PeopleSoft applications and WebLogic Platform.



#### iWay Intelligent Adapters for Oracle Integration

The iWay Intelligent Adapter for Oracle Applications communicates to the Oracle E-Business Suite using interface tables and stored procedures, even enabling developers to manage transactions across multiple adapter calls.



#### iWay Adapter for Siebel Systems

The iWay Intelligent Adapter for Siebel incorporates in-depth knowledge of Siebel data interfaces, workflow processing, and metadata to support integration with Siebel via Siebel's Business Integration Manager (BIM) facility, using COM business services and Siebel XML, and utilizes native Siebel business objects and functionality. Siebel UAN is not required.

#### iWay Intelligent Adapter for Baan

The iWay Intelligent Adapter for Baan supports events for execution of Baan item, customer, sales order, and inventory objects and polls the Baan events database at user-configured time intervals and translates the event information to XML.

#### iWay Intelligent Adapter for Clarify

The iWay Intelligent Adapter for Clarify uses native Clarify business objects, metadata, and the Clarify rules manager to capture Clarify application events and exchange messages and transactions between Clarify applications and the BEA WebLogic Platform. The adapter's ClearBasic functionality also enables you to leverage custom ClearBasic applications.

#### iWay J.D. Edwards OneWorld Adapter Technologies

The iWay J.D. Edwards Adapter is a native, 100% Java adapter that allows for tight design-time integration of J.D. Edwards OneWorld ERP, SCM, or B2B marketplace application systems within BEA WebLogic Workshop.

#### The iWay Intelligent Adapter for Manugistics

The iWay Adapter for Manugistics provides support for the Manugistics Supply Chain Planning and Optimization (SCPO) and Transportation (TRNS) product lines and dynamically introspects metadata to identify customized business events and transactions.

## Technology Adapters

### iWay Intelligent Adapter for .NET

iWay Software's Adapter for .NET exposes .NET assemblies to provide universal connectivity with the WebLogic Workshop using XML.

### iWay Intelligent Adapter for CORBA

iWay Intelligent Adapter for CORBA uses CORBA IDL entries to generate local and remote services, which are then used by the BEA WebLogic Platform as proxies for CORBA methods. The adapter provides configuration information for an interoperable naming service (INS) and interface repository (IFR).

### iWay Program Adapters

iWay Program Adapters make it easy to reuse business logic written in C, C++, COBOL, RPG, FOCUS, and more – in fact, virtually any language – and incorporate it into the BEA WebLogic Platform through appropriate methods including:

- Dynamic memory allocation using standard calls like malloc (in C), GETCOR (in COBOL under VTAM), and LIB\$GET\_VM (in COBOL under OpenVMS)
- Passing of parameters, along with additional pointers to control blocks as needed
- Dynamic allocation of files on the mainframe, and other platform-specific commands

## e-Business Adapters

### iWay Intelligent Adapter for SWIFT

The iWay Intelligent Adapter for SWIFT lets the BEA WebLogic Platform receive and publish SWIFT messages from a variety of networks. iWay's SWIFT Adapter dynamically formats and transforms SWIFT ISO7775 and ISO15022 messages into SOAP, WSDL, XML, and swiftML for internal processing. The adapter also defines custom messages and parsing rules via a rich GUI environment and XML rules engine that eliminate custom coding.

### iWay Intelligent Adapter for ISO15022

The iWay Intelligent Adapter for ISO 15022 provides four automatic, dictionary-driven transformations for each message type. Incoming ISO 15022 SWIFT MT messages are converted into ISO 7775-based XML documents, and incoming ISO 7775 SWIFT MT messages are converted into ISO 15022-based XML documents. ISO 15022-based and ISO 7775-based XML messages are converted to ISO 7775 and ISO 15022 SWIFT MT messages, respectively.

### iWay FIX Adapter

The iWay Intelligent Adapter for FIX provides a reusable mechanism for parsing, validating, and transforming FIX documents without writing custom code. The adapter for FIX supports the complete FIX 4.0, 4.1, 4.2, and 4.3 message sets as well as session and application FIX protocols.

### iWay Intelligent Adapter for HIPAA

The iWay Intelligent Adapter for HIPAA provides support for all HIPAA ANSI X12N 4010 and 4010A transactions and provides a reusable mechanism for parsing, validating, and

transforming HIPAA documents without writing custom code. The iWay Intelligent Adapter for HIPAA was certified HIPAA-compliant using Claredi tools.

### **iWay Intelligent Adapter for HL7**

The iWay Intelligent Adapter for HL7 incorporates in-depth knowledge of the HL7 standard message specification to optimize the integration of HL7 transactions with back-end transaction processing systems across the BEA WebLogic Platform. The adapter supports over 140 message formats of HL7 2.3 and higher over a wide variety of transports and offers XML schemas for all HL7 messages, segments, fields, and data types.

### **Transaction Processing Adapters**

#### **iWay Intelligent Adapter for CICS and iWay Intelligent Adapter for IMS/TM**

iWay Transaction Adapters reuse existing CICS and IMS/TM transactions, providing access to data controlled by CICS and IMS dynamically, without custom coding, reducing the time, cost, and complexity of integrating TP systems.

### **Terminal Emulation Adapters**

#### **iWay Intelligent Adapter for 3270**

The iWay Intelligent Adapter for 3270 provides advanced terminal emulation functionality to easily capture screens, keystrokes, and output parameters to emulate online mainframe-based 3270 sessions. The adapter also has the ability to record all mainframe screens into a recorded file to enable an offline development process, disconnected from the mainframe.

#### **iWay Intelligent Adapter for 5250**

The iWay Intelligent Adapter for 5250 provides advanced terminal emulation functionality to easily capture screens, keystrokes, and output parameters to emulate online iSeries-based 5250 sessions. The adapter also has the ability to record all iSeries screens into a recorded file to enable an offline development process, disconnected from the iSeries platform.

### **Data Adapters**

#### **iWay Intelligent Adapter for RDBMS, Including ADABAS, DB2/390, DB2/400, IDMS, IMS/DB, VSAM, and OS/400 Files**

The iWay Intelligent Adapter for RDBMS is a suite of adapters that uses XML schemas, SQL, and JDBC to exchange queries and transactions between all leading RDBMS servers and the BEA WebLogic Platform. The adapter supports XA-compliant database transactions for all event or service interactions with relational database management systems. In addition, it can call iWay data adapters for a wide variety of legacy and nonrelational data.

## Data Platforms Supported

---

Adabas	IDS-II	OpenIngres
Adabas/C	ImageSQL	Oracle
ALLBASE/SQL	IMS	PROGRESS
C-ISAM (Informix)	InfoMan	QSAM
C-ISAM (Microfocus)	Informix	Rdb
C-ISAM ACCUCORP	Ingres	Red Brick
CA-Datcom	Interplex	RMS
CA-IDMS/DB	ISAM	SAP BW
CA-IDMS/SQL	KSAM	SAP R/3
Cloudscape	Lotus Notes	SQL/DS
D-ISAM	Microsoft Access	SUPRA
DB2	Microsoft OLAP Services	Sybase
DB2/400	Microsoft SQL Server	Sybase/IQ
DBASE	Millennium	System 2000
DBMS	Model 204	Teradata
EJB	MUMPS (Digital Standard MUMPS)	TOTAL
ENSCRIBE	MySQL	TurboIMAGE
Essbase	NOMAD	Unisys DMS 1100/2200
Excel	NonStop SQL	UNISYS DMS II
Flat Files	Nucleus	UniVerse
FOCUS Data Access	Omnidex	VSAM
Foxpro		

## Comprehensive Platform Support

The iWay 5.5 Universal Adapter Framework and Intelligent Adapters for WebLogic 8.1 offer broad support for the following platforms:

Operating Systems	Databases	JVM
Windows 2000 Professional, 2003	Oracle 9.2 Oracle 8.1	Sun 1.4.2 jRockit 1.4.1
Solaris 8, 9	SQL Server 2000	
HPUX 11, 11i	Sybase 12.5	
HPUX 11i v2 IA64 Itanium	DB2 8.1	
AIX 5L v5.1, 5.2		
Linux ES 2.1		

## Find Out More

To see how we can help you succeed, visit us at [www.iwaysoftware.com](http://www.iwaysoftware.com), e-mail us at [info@iWaySoftware.com](mailto:info@iWaySoftware.com), or in the U.S. and Canada, call toll-free **(866) 297-4929**.

### Accelerate SOA With iWay and BEA

The iWay Universal Adapter Framework combined with the BEA WebLogic Platform accelerates the integration and assembly of applications and resources into agile business services creating the ideal foundation for innovation and competitive advantage.

### About iWay Software

iWay Software, an Information Builders company and the world's leading adapter vendor, accelerates business integration by providing tools that make service-oriented architectures easy to implement. Clients achieve short-term ROI by using iWay to reduce custom programming and solve problems quickly, while incrementally creating an architecture that supports long-term projects. The biggest names in software use iWay adapters to simplify access to ERP and CRM systems, messaging, legacy systems, e-business protocols like AS2 and ebXML, and more. Additional message transformation and data integration make iWay a natural integration choice – standalone or with other middleware. For more information, visit [www.iwaysoftware.com](http://www.iwaysoftware.com).

### About BEA

BEA Systems, Inc. (Nasdaq: BEAS) is the world's leading application infrastructure software company, providing the enterprise software foundation for more than 13,500 customers around the world, including the majority of the Fortune Global 500. BEA and its WebLogic® brand are among the most trusted names in business. Headquartered in San Jose, Calif., BEA has 81 offices in 34 countries and is on the Web at [www.bea.com](http://www.bea.com).



**Corporate Headquarters** Two Penn Plaza, New York, NY 10121-2898 (866) 297-4929  
[www.iwaysoftware.com](http://www.iwaysoftware.com) [info@iwaysoftware.com](mailto:info@iwaysoftware.com)

**For International Inquiries** +1(212) 330-1700

Copyright © 2004 by iWay Software. All rights reserved. Patent pending. [37] All products and product names mentioned in this publication are trademarks or registered trademarks of their respective companies.



Printed in the U.S.A.  
on recycled paper

DN3601024.1204